

Alien Series 24/48V WISP PoE Switch

WI-PS310GF-Alien | WI-PMS310GF-Alien | WI-PMS310GF-Alien-I | WI-PMS328GF-Alien
WI-PoE90X | WI-PoE61-24V

Overview

The Alien PoE Switch Series was designed specifically for the WISP with a rugged chassis and extended operating temperature range. It features a simple yet powerful user interface providing the software features WISPs need in a switch.

Features

24V/48V Auto-detect

PoE Switch is suitable for 48V 802.3af/at and 24V PoE powered devices like many wireless AP, CPE, IP-cameras, VOIP phones, etc.

Full Gigabit

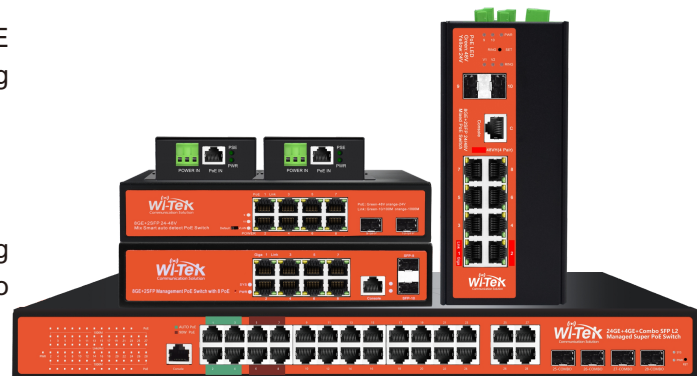
Build and expand your network with Wi-Tek full gigabit PoE switch, delivering robust performance switching for growing networks.

Fiber Connectivity

The switch provides fiber connectivity options for your growing networks. All switches include two SFP ports, providing up to 1000Mbps uplink ports.

Powerful Functionality

The L2 Managed PoE Switch uses a intelligent web page that provides basic switching features, PoE configuration per port, and a variety of advanced features.



Specifications



| HARDWARE FEATURES | WI-PMS310GF-Alien | WI-PMS310GF-Alien-I | WI-PMS328GF-Alien | WI-PS310GF-Alien | WI-POE90X | WI-POE61-24V |
|------------------------|--|---|---|---|--|---|
| L2 Managed | Yes | Yes | Yes | No | No | No |
| Interface | 8 10/100/1000Mbps RJ45 Ports 2 1000Mbps SFP Slots 1 Console Port | 8 10/100/1000Mbps RJ45 Ports 2 1000Mbps SFP Slots | 24 10/100/1000Mbps RJ45 Ports 4 1000Mbps Combo SFP Slots 1 Console Port | 8 10/100/1000Mbps RJ45 Ports 2 1000Mbps SFP Slots | 2 100/1000Mbps RJ45 Ports | 2 100/1000Mbps RJ45 Ports |
| PoE Port | Port 1- 8: 802.3 af/at and 24V Passive | Port 1-2: 48V 802.3bt 60W Port 3-8: 24V Passive or 48V 802.3af/at | Port 1-4: 24V Passive or 802.3 af/at Port 5-8: 802.3bt 90W Port 9-24: 802.3af/at | Port 1- 8: 802.3 af/at and 24V Passive | PoE IN: Passive 24V PoE OUT: 802.3af/at 48V | PoE IN: 802.3af/at 48-52V PoE OUT: Passive 24V |
| Network Media | 10BASE-T: UTP category 3, 4, 5 cable (maximum 100m) 100BASE-TX/1000Base-T: UTP category 5, 5e, 6 or above cable (maximum 100m) 1000BASE-X: MMF, SMF 1000Base-L X:62.5µm/50µm MM(2m~550m) or 10µm SMF(2m~5000m) | | | | 10BASE-T: UTP category 3, 4, 5 cable (Max 100m) EIA/TIA-568 100Ω STP (Max 100m) 100BASE-TX: UTP category 5, 5e cable (Max 100m) EIA/TIA-568 100Ω STP (Max 100m) 1000BASE-T: UTP category 5, 5e, 6 cable (Max 100m) | |
| Fan Quantity | Fanless | Fanless | 2 Fans | Fanless | Fanless | Fanless |
| Power Consumption | 150W (max. with PoE device connected) | 300W (max. with PoE device connected) | 400W | 150W (max. with PoE device connected) | 30W | 24W |
| External Power Supply | DC 48-55V 5A Max AC 110~240V 50/60HZ | Dc1: 9-52V 10A Max DC2: 37-57V 8A Max DC3: 37-57V 8A Max | AC 110~240V 50/60HZ | AC 110~240V 50/60HZ DC 48-55V 5A Max | DC IN 12-57V PoE IN 24V | DC IN 36-60V PoE IN 48V |
| Exchange Capacity | 20Gbps | 20Gbps | 56Gbps | 20Gbps | 2Gbps | 2Gbps |
| Packet Forwarding Rate | 14.9Mpps | 18Mpps | 41.7Mpps | 14.9Mpps | 14.9Mpps | 14.9Mpps |
| Mac Address Table | 8K | 8K | 16K | 4K | 2K | 2K |
| Packet Buffer Memory | 1.5Mb | 4Mb | 12Mb | 1.5Mb | 1Mb | 1Mb |
| Jumbo Frame | 10240 Bytes | 10240 Bytes | 10240 Bytes | 10240 Bytes | 10240 Bytes | 10240 Bytes |
| Protection Level | 6KV Lightning protection 6KV ESD Contact discharge | 6KV Lightning protection 8KV ESD Contact discharge | 6KV Lightning protection 6KV ESD Contact discharge | | 4KV Lightning protection 4KV ESD Contact discharge | |
| Transmission Method | Store-And-Forward | | | | | |
| Advanced Functions | Priority Function Mac Address Auto-Learning And Auto-Aging Store and forward IEEE 802.3x flow control for Full-duplex Mode Backpressure for Half-duplex Mode | | | Mac Address Auto-Learning And Auto-Aging Store and forward IEEE 802.3x flow control for Full-duplex Mode Backpressure for Half-duplex Mode | Mac Address Auto-Learning And Auto-Aging Store and forward IEEE 802.3x flow control for Full-duplex Mode Backpressure for Half-duplex Mode | |
| OTHERS | | | | | | |
| Certification | CE, FCC, RoHS | | | | | |
| Package Dimension | 270×256×65 mm | 270×220×67 mm | 510×375×90 mm | 270×256×65 mm | 125×97×40 mm | 125×97×40 mm |
| Switch Dimension | 210×140×45 mm | 163×133×75 mm | 440×29×45 mm | 205×140×45 mm | 85×87×30 mm | 85×87×30 mm |
| Gross Weight | 1.37kg | 1.92kg | 4.11kg | 1.64kg | 0.19kg | 0.19kg |
| Net Weight | 0.91kg | 1.52kg | 3.36kg | 1.05kg | 0.15kg | 0.15kg |
| Package Contents | 1 × PoE Switch 1 × Power Cord 1 × User Guide | 1 × PoE Switch 1 × Temperature Sensor 1 × Screw Driver 1 × User Guide | 1 × PoE Switch 1 × Power Cord 1 × Rack-Mount Kit 1 × Robber Feet 1 × User Guide | 1 × PoE Switch 1 × Power Cord 1 × User Guide | 1 × PoE Converter 1 × User Guide | 1 × PoE Converter 1 × User Guide |
| Working Environment | Working Temperature: -10°C~55°C Storage temperature: -40°C~70°C Working Humidity: 10%~90% RH non-condensing Storage Humidity: 5%~90% RH non-condensing | Working Temperature: -40°C~80°C Storage temperature: -40°C~90°C Working Humidity: 10%~90% RH non-condensing Storage Humidity: 5%~95% RH non-condensing | Working Temperature: -10°C~55°C Storage temperature: -40°C~70°C Working Humidity: 10%~90% RH non-condensing Storage Humidity: 5%~90% RH non-condensing | Working Temperature: -10°C~55°C Storage temperature: -40°C~70°C Working Humidity: 10%~90% RH non-condensing Storage Humidity: 5%~90% RH non-condensing | Operating Temperature: -10°C~70°C | Operating Temperature: -10°C~70°C |

| SOFTWARE FEATURES | WI-PMS310GF-Alien | WI-PMS310GF-Alien-I | WI-PMS328GF-Alien |
|---------------------|--|---------------------|-------------------|
| Advanced Functions | Support 802.1p CoS/DSCP priority | | |
| | Support 4 priority queues | | |
| | Queue scheduling: SP, WRR, SP+WRR | | |
| | Port/Flow- based Rate Limiting | | |
| L2 Features | IGMP Snooping V1/V2/V3 | | |
| | 802.3ad LACP (Up to 8 aggregation groups, containing 8 ports per group) | | |
| | Spanning Tree STP/RSTP/MSTP | | |
| | Port isolation | | |
| | BPDU filtering/guard | | |
| | TC/Root protect | | |
| | Loop back detection | | |
| | 802.3x Flow Control | | |
| VLAN | Supports up to 4K VLANs simultaneously (out of 4K VLAN IDs) | | |
| | Port/ MAC/Protocol-based VLAN | | |
| | Management VLAN configuration | | |
| Access Control List | L2 - L4 package filtering based on source and destination MAC address, IP address, TCP/UDP ports, 802.1p, DSCP, protocol and VLAN ID | | |
| | Time Range Based | | |
| Security | IP-MAC-Port-VID Binding | | |
| | IEEE 802.1X Port/MAC Based authentication, Radius, Guest VLAN | | |
| | DoS Defence | | |
| | Dynamic ARP inspection (DAI) | | |
| | SSH v1/v2 | | |
| | SSL v2/v3/TLSv1 | | |
| | Port Security | | |
| | Broadcast/Multicast/Unknown-unicast Storm Control | | |
| Management | Web-based GUI and CLI management | | |
| | SNMP v1/v2c/v3, compatible with public MIBs DHCP/BOOTP Client, DHCP Snooping, DHCP Option82 | | |
| | CPU Monitoring | | |
| | Port Mirroring | | |
| | Time Setting: SNTP | | |
| | Integrated NDP/NTDP feature | | |
| | Firmware Upgrade: TFTP & Web | | |
| | System Diagnose: VCT | | |
| | SYSLOG & Public MIBS | | |



Wireless-Tek Technology Limited

Address: Room 402 4F, BiaoFan Technology Building, Bao'An Avenue, FuYong Town, Bao'An district, ShenZhen

Website: www.wireless-tek.com

Tel: 86-0755-32811290

Email: sales@wireless-tek.com

Technical Support: tech@wireless-tek.com



Technical Support



Cloud Management



Company Website